



DALGOPOL  
MUNICIPALITY  
BULGARIA



AKSAKOVO  
MUNICIPALITY  
BULGARIA



OSILO  
MUNICIPALITY  
ITALY



NOVA GORICA  
MUNICIPALITY  
SLOVENIA



VILA NOVA DE CERVEIRA  
MUNICIPALITY  
PORTUGAL



# Aksakovo 16 May 2019

## CONFERENCE “Those who want more do more»

The restructuring of Regina Elena  
Project by Municipality of Osilo Italy



Comune di Osilo

# The restructuring of «Regina Elena Building

- ▶ The restructuring of the Building known as «Regina Elena» (Queen Elena), is a project started in 2000 with regional funds and then financed by POR FESR 2007/2013 (The European Fund for Regional Development).
- ▶ The total amount of the expenses has been € 676.389,44.



# The name of the building: Regina Elena

The name of the Building is dedicated to Queen Elena of Montenegro, who married the future King of Italy Vittorio Amedeo III. She was loved by the subjects, because she paid more attention to them and their needs than the King himself.



# The origin of the Project

- ▶ The Building has medieval origins and has been a kindergarten and nursery school. In the 50's it was abandoned and the building was in very bad conditions. So in 2000 it was decided by the administrators of the time to interview (by the Sardinian Region too) and realize a residential facility for the elderly.



Children in Regina Elena School in the 1933

# The origin of the Project/2



# The origin of the Project/3



# The restructuring

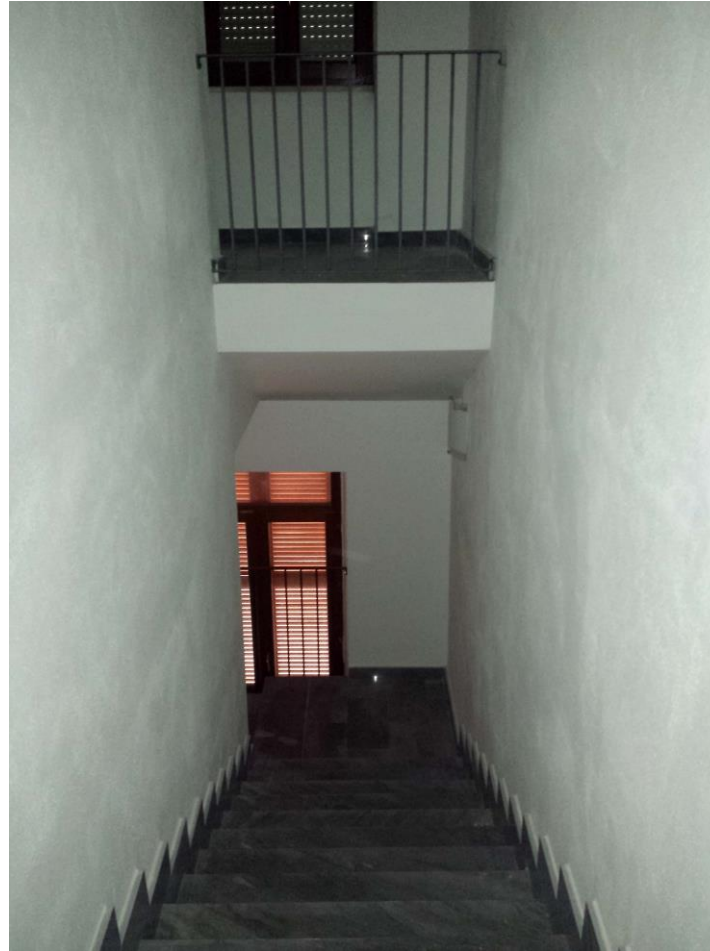
- ▶ The restructuring took much more longer then forseen and ended only in 2018. The works on the building were mainly:
- ▶ Electrical system
- ▶ Hydraulic system
- ▶ Heating system with oil boiler and photovoltaic panels
- ▶ Internal and external fixtures
- ▶ Facade
- ▶ Containment wall

# The results





## The results/2



# The inauguration



# The present

- ▶ Today the structure owned by the Municipality of Osilo is managed by a social cooperative under concession for 20 years and can host an Integrated Community, a Housing Community and a Day Center for the elderly;
- ▶ The Integrated Community has a capacity of 14 beds, and as required by current legislation, it is a facility designed to accommodate elderly people who are not self-sufficient with outcomes of physical, mental, sensory, stabilized and not curable at home, with particular attention to people with dementia;
- ▶ The Housing Community has a capacity of 10 beds and welcomes self-sufficient elderly people;
- ▶ The Housing Community has a capacity of 10 beds and welcomes self-sufficient elderly people.  
The Day Center, can accommodate 10 people in semi-residential regime, aimed at elderly / and non self-sufficient, carriers of needs not easily manageable at home and at risk of social isolation.